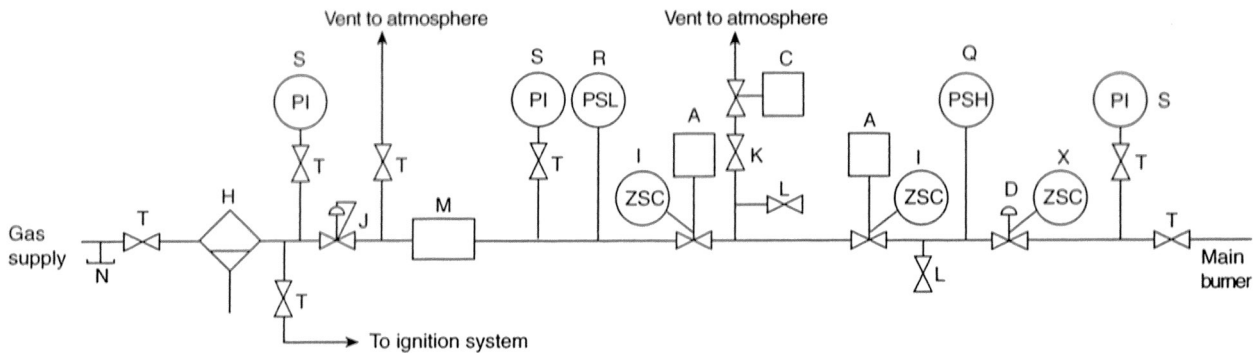


# TYPICAL BURNER SYSTEM ARRANGEMENTS



- A Safety shutoff valve, spring closing (NC)
- C Vent valve, spring opening (NO)
- D Gas flow control valve
- H Gas strainer
- I Closed position interlock on valve safety shutoff
- J Constant gas pressure regulator valve
- K Vent line manual shutoff valve for leakage testing (locked or sealed open)
- L Leakage test connection
- M Gas meter (optional)
- N Drip leg
- Q High gas pressure switch
- R Low gas pressure switch
- S Pressure gauge
- T Manual shutoff valve
- X Low fire start switch

Note: NC = normally closed, deenergized  
 NO = normally open, deenergized

### Safety shutdown interlocks (not shown)

- Flame detector(s)
- Excessive steam pressure interlock  
 (excessive water temperature and pressure interlock  
 for hot water boilers)
- Auxiliary low water cutoff (one required)
- Combustion air supply interlock

*Typical Fuel Supply System and Safety Controls for Gas Burner*